

ANNEX BB: VILLAGE OF VICTORY

Jurisdiction Profile.....	2
Overview	2
Population and Demographics.....	3
Population Growth.....	4
Existing Land Use And Development Trends.....	4
Changes in Vulnerability	5
Future Development.....	6
Plan Maintenance.....	6
Public Participation	7
Hazard Profiles	8
Dam Failure.....	8
Drought	9
Earthquake	10
Extreme Cold.....	12
Extreme Heat	13
Flood	14
Hail.....	17
Hurricane / Tropical Storm.....	20
Ice Storm	22
Landslide	23
Lightning.....	24
snow Storm	26
Tornado.....	27
Wildfire	29
Wind.....	33
Climate Change Considerations	35
Human-Caused Hazards	35
Previous Mitigation Actions	36
New Mitigation Actions.....	39
Capability Assessment.....	45

ANNEX BB: VILLAGE OF VICTORY

The Saratoga County Hazard Mitigation Action Plan Update 2025 relates to the multiple jurisdictions therein from a county wide perspective. The shared plan includes the detailed hazard identification and risk assessment, a complete hazard event history, climate change trends and future impacts, location maps, extent tables and summary statements on both probability and potential severity. This annex is supplemental data provided specific to the municipality herein and focuses on the unique local risks and mitigation strategies.

JURISDICTION PROFILE

OVERVIEW

The Village of Victory is located in Saratoga County, New York, with a population of 694. The Village of Victory is located in the northeastern part of the town of Saratoga, southwest of and bordering the village of Schuylerville. According to the United States Census Bureau, the village has a total area of 0.5 square miles, all of which is land. The village is located on the north bank of Fish Creek, a tributary of the nearby Hudson River. Figure BB-1 shows the general location of the Village of Victory.

VILLAGE OF VICTORY CONTACT INFORMATION

Name: Patrick Dewey

Title: Mayor

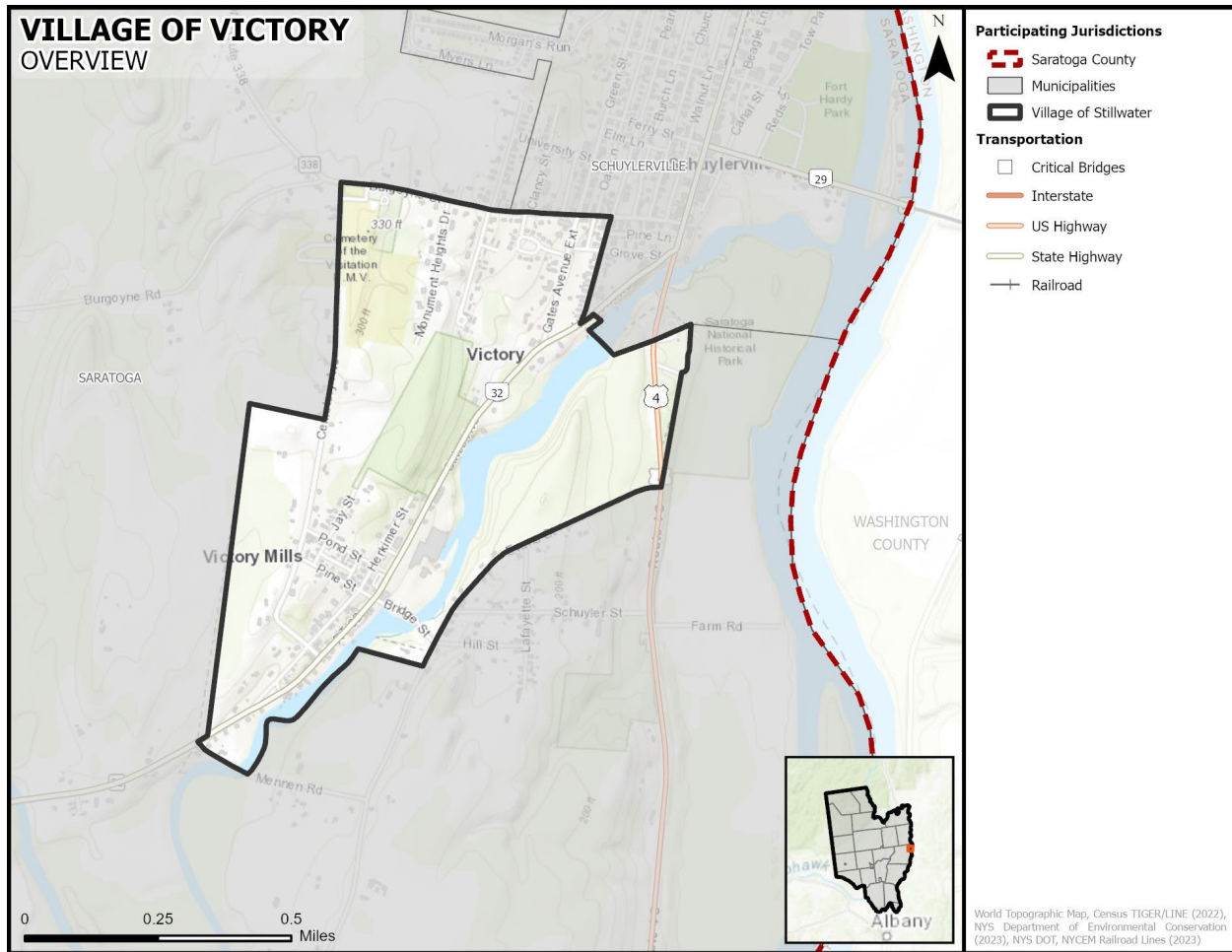
Phone: (518) 695-3808

Address: 23 Pine Street, Victory Mills, NY
12884

Email: pdewey@all-lifts.com

ANNEX BB: VILLAGE OF VICTORY

Figure BB-1. Village of Victory Planning Area



POPULATION AND DEMOGRAPHICS

According to the 2020 Census population count, the Village of Victory has an official population of 666 residents, a 15 percent increase since the 2010 census. Table BB-1 shows the population distribution in the Village of Victory in 2010, 2020 (Census population count), and 2022 (2022 American Community Survey (ACS) five-year estimates. Note that in some cases the 2022 ACS estimates may differ from the 2020 Census count; the ACS estimates are used throughout this section for consistency.¹

Table BB-1. Population Distribution for the Village of Victory

JURISDICTION	TOTAL 2010 POPULATION	TOTAL 2020 POPULATION (Census)	TOTAL 2022 POPULATION (ACS Estimates)	PERCENTAGE CHANGE 2010-2022
Village of Victory	605	666	694	15%

¹ Source: <https://www.census.gov/geographies/reference-maps/2010/geo/2010-pumas/new-york.html>, <https://www.census.gov/en.html> and <https://www.census.gov/acs/www/data/data-tables-and-tools/data-profiles/2022/>

ANNEX BB: VILLAGE OF VICTORY

Table BB-2 summarizes select characteristics of vulnerable or sensitive populations in the Village of Victory using data from the U.S. Census Bureau 2022 American Community Survey (ACS) five-year estimates.

Between official U.S. Census population counts, the estimate uses a formula based on new residential building permits and household size. It is simply an estimate and there are many variables involved in achieving an accurate estimation of people living in a given area at a given time.

Table BB-2. Populations at Greater Risk for the Village of Victory

JURISDICTION	65 AND OLDER	UNDER 5	WITH A DISABILITY	BELOW POVERTY LEVEL	LIMITED ENGLISH SPEAKING
Village of Victory	115	57	112	108	7

POPULATION GROWTH

The official 2020 Village of Victory population is 666. Overall, the Village of Victory experienced an increase in population between 1990 and 2020 of 15 percent, or an increase of 85 residents. Between 2010 and 2020, the Village of Victory experienced a population growth. Table BB-3 provides historic change rates in the Village of Victory.

Table BB-3. Population Growth for the Village of Victory, 1990-2020²

JURISDICTION	1990 ³	2000 ⁴	2010	2020	POP CHANGE 1990-2020	PERCENT OF CHANGE	POP CHANGE 2010-2020	PERCENT OF CHANGE
Village of Victory	581	544	605	666	85	15%	61	10%

EXISTING LAND USE AND DEVELOPMENT TRENDS

A review of building permits can also give a picture of the built environment and the number of buildings that are being constructed in the Village of Victory. Table BB-4 lists the number of residential buildings and total units authorized through a permit from the Village of Victory, where data was available, between 2019 and 2023.

Table BB-4. Building Permits for the Village of Victory, 2019-2023⁵

JURISDICTION	2019		2020		2021		2022		2023	
	Total Buildings	Total Units	Total Buildings	Total Units	Total Buildings	Total Units	Total Buildings	Total Units	Total Buildings	Total Units
Village of Victory	0	0	1	1	1	1	1	1	1	1

² U.S. Census Bureau

³ Source: <https://www2.census.gov/library/publications/decennial/1990/cp-1/cp-1-34-2.pdf?#>

⁴ Source: <https://www2.census.gov/library/publications/2001/compendia/ccdb00/2000ccdb.pdf>

⁵ U.S. Census Bureau, Building Permit Survey, 1992-2022, <https://www.census.gov/construction/bps/>

ANNEX BB: VILLAGE OF VICTORY

Certain types of housing found in the Village of Victory are more vulnerable than typical site-built, newly constructed residential structures. This includes mobile or manufactured homes, and single-family residences (SFR) that are built before 1980, as they are typically built to lower or less stringent construction standards than newer construction. Table BB-5 includes housing inventory data for the Village of Victory per the American Community Survey five-year estimates.

Table BB-5. Housing Inventory and Vulnerable Structures, for the Village of Victory⁶

JURISDICTION	TOTAL HOUSING UNITS	BUILT PRIOR TO 1980	MOBILE HOMES
Village of Victory	268	172	49

CHANGES IN VULNERABILITY

The Village of Victory has experienced an increase in overall population of 10 percent between 2010 and 2020. The American Community Survey estimates the 2022 total housing units for the to be 268. The total building permits issued between 2019 and 2023 represent approximately 1.5 percent of the total housing units available in the Village of Victory. The overall population increase, combined with the increase in housing units indicates a slight increase in vulnerability to all hazards in terms of populations and the built environment.

Table BB-6. Changes in Vulnerability, for the Village of Victory

JURISDICTION	POPULATION TREND	HOUSING TREND	OVERALL VULNERABILITY CHANGES
Village of Victory	Increasing	Increasing	Slight Increase

Table BB-7 lists the total number of building permits issued in the Village of Victory from 2019 through 2023, including the number of permits issued in the Special Flood Hazard Area and the percentage of SFHA permits issued overall.

Table BB-7. Building Permits, Village of Victory, 2019-2023

JURISDICTION	TOTAL BUILDING PERMITS	SFHA PERMITS	PERCENT OF PERMITS IN SFHA
Village of Victory	4	0	0

No permits were issued in the SFHA during that same time period, indicating no increase in flood risk due to new development.

Changes in vulnerability are applicable to all natural hazards except when discussing dam failure as vulnerability for this hazard is discussed in relation to changes in the estimated inundation areas for profiled dams. The Village of Victory does not own any dams and is not located in any estimated dam inundation areas, therefore changes in vulnerability in the estimated inundation areas for profiled dams does not pertain to the Village of Victory. While flood and wildfire hazards

⁶ The Housing Inventory and Vulnerable Structures are based off the 2022 American Community Survey 5-Year Estimates Data Profiles.

ANNEX BB: VILLAGE OF VICTORY

feature geographical boundaries, increases in population and building inventory can increase overall vulnerability for these hazards even when the trends occur outside of the known hazard boundary. Development decreases permeable surface areas and increases runoff, increasing flood risk. As population density increases, the Wildland Urban Interface (WUI) typically increases. WUI growth often results in more wildfire ignitions, which puts more houses and lives at risk.

FUTURE DEVELOPMENT

To better understand how future growth and development in the Village of Victory might affect hazard vulnerability, it is useful to consider population growth, occupied and vacant land, the potential for future development in hazard areas, and current planning and growth management efforts. This section includes an analysis of the projected population change, and economic impacts.

Population projections from 2010 to 2040 are listed in Table BB-8, as provided Cornell University's Program on Applied Demographics⁷. **This information is only available at the County level;** however, the population projection shows an increase in population density for the County, which would mean an overall increase for the planning area.

Table BB-8. Saratoga County Population Projections

LAND AREA (square miles)	2010		2020		2030		2040	
	Population							
	Total Number	Density (Land Area, sq. miles)	Total Number	Density (Land Area, sq. miles)	Total Number	Density (Land Area, sq. miles)	Total Number	Density (Land Area, sq. miles)
810	219,607	271.12	234,009	288.90	246,743	304.62	252,521	311.75

PLAN MAINTENANCE

The Saratoga County Hazard Mitigation Plan Update provides explanation on how each participating jurisdiction will be involved in implementing, evaluating, and enhancing the Plan over time. Please see Section 24 of this Plan for additional information regarding plan maintenance for the entire planning area.

Periodic revisions of the Plan are required to ensure that goals, objectives, and mitigation actions are kept current. When the plan is discussed in these sections it includes the risk assessment and mitigation actions as a part of the monitoring, evaluating, updating and review process. Revisions may be required to ensure the Plan remains in compliance with federal and state statutes and regulations. Table BB-9 indicates the department and title of the party responsible for Plan monitoring, evaluating, updating, and review of the Plan.

Table BB-9. Team Member Responsible for Plan Monitoring, Evaluating, Updating, and Review of the Plan

JURISDICTION	TITLE
Village of Victory	Mayor

⁷ Source: <https://pad.human.cornell.edu/counties/projections.cfm>

ANNEX BB: VILLAGE OF VICTORY

PUBLIC PARTICIPATION

A series of public meetings were held throughout the Saratoga County planning area to collect public and stakeholder input. Topics of discussion included the purpose of hazard mitigation, discussion of the planning process, and types of natural hazards. In addition, a public survey was developed to solicit public input during the planning process from citizens and stakeholders and to obtain data regarding the identification of any potential hazard mitigation actions or problem areas. The survey was promoted by local officials and a link to the survey was posted on the Village of Victory's website. There were no surveys completed for the Village of Victory. Additional meeting documentation and survey results can be viewed in Appendix E and Appendix B, respectively.

The draft Plan was made available to the general public for review and comment on Saratoga County's website for 30 days. To ensure opportunities are given to all citizens including those without internet access, a paper copy of the draft plan annexes was also available at municipal offices and public library locations with a comment form that included an email and phone number for the public to provide feedback. Refer to Section 2 for additional information on public involvement in the planning process.

Public input was an integral part of the preparation of this Plan and will continue to be essential for Plan updates. The public will be directly involved in the annual evaluation, monitoring, reviews and cyclical updates. Changes or suggestions to improve or update the Plan will provide opportunities for additional public input. The public can review the Plan on the Village of Victory's website, where officials and the public are invited to provide ongoing feedback, via email.

The Planning Team is responsible for notifying stakeholders and community members on an annual basis and maintaining the Plan. Media, including local newspaper and radio stations, will be used to notify the public of any maintenance or periodic review activities during the implementation, monitoring, and evaluation phases. Additionally, local news media will be contacted to cover information regarding Plan updates, status of grant applications, and project implementation. Local and social media outlets, such as Facebook and Instagram, will keep the public and stakeholders apprised of potential opportunities to fund and implement mitigation projects identified in the Plan.

ANNEX BB: VILLAGE OF VICTORY

HAZARD PROFILES

DAM FAILURE

The Village of Victory is not profiling dam failure. The community does not own any dams and is not located in any estimated dam inundation zones. Dam failure has not impacted the community in the past and is not anticipated to impact the community in the future. Any localized flooding the community may experience due to a dam breach is addressed in the flood hazard profile. Therefore, this hazard does not require further analysis.

ANNEX BB: VILLAGE OF VICTORY

DROUGHT

HAZARD DESCRIPTION, LOCATION, EXTENT, & HISTORICAL OCCURRENCES

The Saratoga County Hazard Mitigation Plan Update provides a hazard description, location, and extent of the drought hazard for each participating jurisdiction (Section 6). Drought conditions are not confined to specific geographic boundaries and are considered similar for all participating jurisdictions throughout the planning area. Historical drought data for the County, including the Village of Victory, are provided on a County-wide basis per the NCEI database. Therefore, all historical events are listed in Section 6 of the Plan Update.

PROBABILITY OF FUTURE EVENTS

According to historical records for the Saratoga County planning area, the Village of Victory can expect to experience a drought event approximately once every one to two years. This frequency supports a “Highly Likely” probability of future events.

VULNERABILITY AND IMPACT

While the entirety of the Saratoga County planning area, including the Village of Victory, is exposed to drought events, existing buildings, infrastructure, and critical facilities are not likely to sustain significant damage from these events. However, drought impacts are mostly experienced in water shortages, breaks in water lines, or crop and livestock losses on agricultural lands and typically have minimal impact on buildings.

The Village of Victory planning team members identified critical facilities as assets that are considered the most important to the planning area and are susceptible to a range of potential hazard impacts caused by drought events. Drought impacts to critical facilities are similar across the entire planning area and are listed in detail in the drought hazard profile (Section 6). The following critical facilities would be vulnerable to drought events in the Village of Victory:

Table BB-10. Critical Facilities at Risk

JURISDICTION	CRITICAL FACILITIES
Village of Victory	1 Fire Station, 2 Municipal Facilities, 2 Sewage and Water Facility

The population over 65 in the Village of Victory is estimated at 16.6 percent of the Village’s total population and children under the age of 5 are estimated at 8.2 percent. The population with a disability is estimated at 16.1 percent of the Village’s total population. An estimated 15.6 percent of the Village of Victory’s population live below the poverty level and 1.0 percent of the populations speak a language other than English (Table BB-11).

Table BB-11. Populations at Greater Risk

JURISDICTION	65 AND OLDER	UNDER 5	WITH A DISABILITY	BELOW POVERTY LEVEL	LIMITED ENGLISH SPEAKING
Village of Victory	115	57	112	108	7

Historic losses are reported on a county-wide basis. Please see Section 6 of this Plan for additional information on historical and annualized losses for the entire planning area.

ANNEX BB: VILLAGE OF VICTORY

EARTHQUAKE

HAZARD DESCRIPTION, LOCATION, EXTENT, & HISTORICAL OCCURRENCES

The Saratoga County Hazard Mitigation Plan Update provides a hazard description, location, and extent of the earthquake hazard for each participating jurisdiction (Section 7). The concentration of earthquakes in New York State is located in three general regions. The Saratoga Planning area is located in one of these general regions that includes the northeast third of the State. There is no geographic boundary to the hazard within the planning area therefore the risk is considered similar for all participating jurisdictions throughout Saratoga County. Historical earthquake data for the County, including the Village of Victory, are provided on a County-wide basis per the USGS database. Therefore, all historical events are listed in Section 7 of the Plan Update.

PROBABILITY OF FUTURE EVENTS

According to the USGS, the entire Saratoga County planning area, including Village of Victory, has a five to twenty-five percent chance of a slightly damaging (or greater) earthquake within 100 years. Based on historical records, the probability of an earthquake affecting the planning area is “Unlikely,” meaning that an event is probable in the next 10 years.

VULNERABILITY AND IMPACT

While the entirety of the Saratoga County planning area, including the Village of Victory, is exposed to earthquake events, damaging earthquakes for the planning area are exceedingly rare. With no significant historical events recorded, neither annualized loss-estimates or a breakdown of potential dollar losses of critical facilities and infrastructure from earthquakes are available. According to the New York State Hazard Mitigation Plan there have been no known impacts to structures or infrastructure in the area due to earthquakes.

The lack of historical events or impacts supports a “Limited” severity of impact meaning injuries and/or illnesses are treatable with first aid, shutdown of facilities and services for 24 hours or less, and less than 10 percent of property is destroyed or with major damage.

The Village of Victory planning team members identified critical facilities as assets that are considered the most important to the planning area and are susceptible to a range of potential hazard impacts caused by earthquake events. Earthquake impacts to critical facilities are similar across the entire planning area and are listed in detail in the earthquake hazard profile (Section 7). The following critical facilities would be vulnerable to earthquake events in the Village of Victory:

Table BB-12. Critical Facilities at Risk

JURISDICTION	CRITICAL FACILITIES
Village of Victory	1 Fire Station, 2 Municipal Facilities, 2 Sewage and Water Facility

The population over 65 in the Village of Victory is estimated at 16.6 percent of the Village’s total population and children under the age of 5 are estimated at 8.2 percent. The population with a disability is estimated at 16.1 percent of the Village’s total population. An estimated 15.6 percent of the Village of Victory’s population live below the poverty level and 1.0 percent of the populations speak a language other than English (Table BB-13).

ANNEX BB: VILLAGE OF VICTORY

Table BB-13. Populations at Greater Risk

JURISDICTION	65 AND OLDER	UNDER 5	WITH A DISABILITY	BELOW POVERTY LEVEL	LIMITED ENGLISH SPEAKING
Village of Victory	115	57	112	108	7

Historic losses are reported on a county-wide basis. Please see Section 7 of this Plan for additional information on historical and annualized losses for the entire planning area.

ANNEX BB: VILLAGE OF VICTORY

EXTREME COLD

HAZARD DESCRIPTION, LOCATION, EXTENT, & HISTORICAL OCCURRENCES

The Saratoga County Hazard Mitigation Plan Update provides a hazard description, location, and extent of the extreme cold hazard for each participating jurisdiction (Section 8). Extreme cold events are not confined to specific geographic boundaries and are considered similar for all participating jurisdictions throughout the planning area. For the purposes of evaluating this hazard, the following NCEI reporting categories are included under extreme cold: cold/wind chill, extreme cold, and frost/freeze. Historical extreme cold data for the County, including the Village of Victory, are provided on a county-wide basis per the NCEI database. Therefore, all historical events are listed in Section 8 of the Plan Update.

PROBABILITY OF FUTURE EVENTS

According to historical records for the Saratoga County planning area, the Village of Victory can expect to experience approximately three to four extreme cold events each year. This frequency supports a “Highly Likely” probability of future events.

VULNERABILITY AND IMPACT

While the entirety of the Saratoga County planning area, including the Village of Victory, is exposed to extreme cold events, existing buildings, infrastructure, and critical facilities are not likely to sustain significant damage from these events. However, the Village of Victory planning team members identified the following critical facilities (Table BB-14) as assets that are considered the most important to the planning area. These facilities are susceptible to a range of impacts caused by this hazard. Extreme cold impacts to critical facilities are similar across the entire planning area and are listed in detail in the extreme cold hazard profile (Section 8). The following critical facilities would be vulnerable to extreme cold events in the Village of Victory:

Table BB-14. Critical Facilities at Risk

JURISDICTION	CRITICAL FACILITIES
Village of Victory	1 Fire Station, 2 Municipal Facilities, 2 Sewage and Water Facility

The population over 65 in the Village of Victory is estimated at 16.6 percent of the Village’s total population and children under the age of 5 are estimated at 8.2 percent. The population with a disability is estimated at 16.1 percent of the Village’s total population. An estimated 15.6 percent of the Village of Victory’s population live below the poverty level and 1.0 percent of the populations speak a language other than English (Table BB-15).

Table BB-15. Populations at Greater Risk

JURISDICTION	65 AND OLDER	UNDER 5	WITH A DISABILITY	BELOW POVERTY LEVEL	LIMITED ENGLISH SPEAKING
Village of Victory	115	57	112	108	7

Historic losses are reported on a county-wide basis. Please see Section 8 of this Plan for additional information on historical and annualized losses for the entire planning area.

ANNEX BB: VILLAGE OF VICTORY

EXTREME HEAT

HAZARD DESCRIPTION, LOCATION, EXTENT, & HISTORICAL OCCURRENCES

The Saratoga County Hazard Mitigation Plan Update provides a hazard description, location, and extent of the extreme heat hazard for each participating jurisdiction (Section 9). Extreme heat events are not confined to specific geographic boundaries and are considered similar for all participating jurisdictions throughout the planning area. Historical extreme heat data for the County, including the Village of Victory, are provided on a County-wide basis per the NCEI database. Therefore, all historical events are listed in Section 9 of the Plan Update.

PROBABILITY OF FUTURE EVENTS

According to historical records for the Saratoga County planning area, the Village of Victory can expect to experience an extreme heat event approximately once every year. This frequency supports a “Highly Likely” probability of future events.

VULNERABILITY AND IMPACT

While the entirety of the Saratoga County planning area, including the Village of Victory, is exposed to extreme heat events, existing buildings, infrastructure, and critical facilities are not likely to sustain significant damage from these events. However, the Village of Victory planning team members identified the following critical facilities (Table BB-16) as assets that are considered the most important to the planning area. These facilities are susceptible to a range of impacts caused by this hazard. Extreme heat impacts to critical facilities are similar across the entire planning area and are listed in detail in the extreme heat hazard profile (Section 9). The following critical facilities would be vulnerable to extreme heat events in the Village of Victory:

Table BB-16. Critical Facilities at Risk

JURISDICTION	CRITICAL FACILITIES
Village of Victory	1 Fire Station, 2 Municipal Facilities, 2 Sewage and Water Facility

The population over 65 in the Village of Victory is estimated at 16.6 percent of the Village’s total population and children under the age of 5 are estimated at 8.2 percent. The population with a disability is estimated at 16.1 percent of the Village’s total population. An estimated 15.6 percent of the Village of Victory’s population live below the poverty level and 1.0 percent of the populations speak a language other than English (Table BB-17).

Table BB-17. Populations at Greater Risk

JURISDICTION	65 AND OLDER	UNDER 5	WITH A DISABILITY	BELOW POVERTY LEVEL	LIMITED ENGLISH SPEAKING
Village of Victory	115	57	112	108	7

Historic losses are reported on a county-wide basis. Please see Section 9 of this Plan for additional information on historical and annualized losses for the entire planning area.

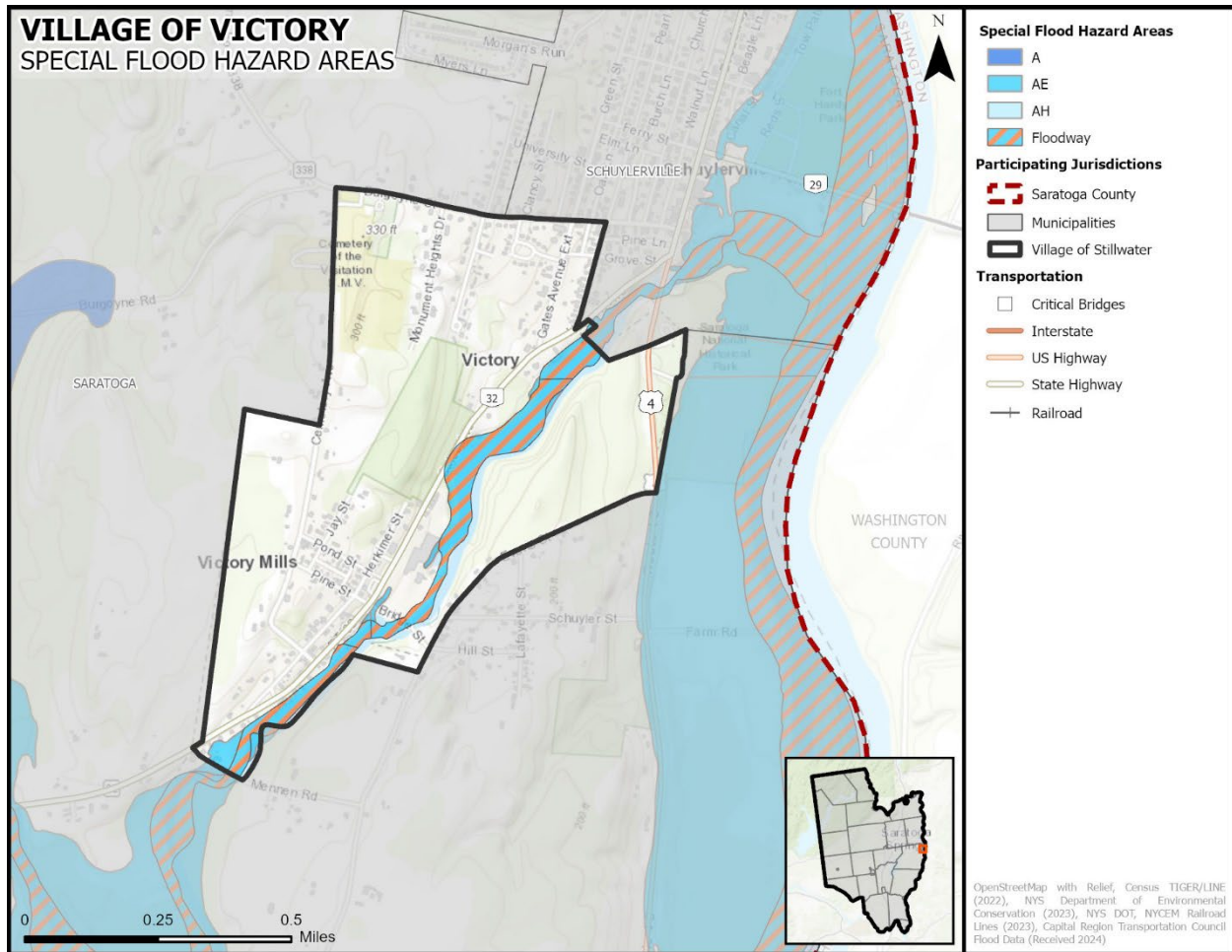
ANNEX BB: VILLAGE OF VICTORY

FLOOD

HAZARD DESCRIPTION, LOCATION, & EXTENT

The Saratoga County Hazard Mitigation Plan Update provides a hazard description and extent of the flood hazard for the entire Saratoga County planning area in Section 10. Full flood zone delineations are available in the Village of Victory including some areas with base flood elevations. The location of estimated flood zones for the Village of Victory, based on data provided by the Capitol Region Transportation Council, is provided in Figure BB-2. FEMA's regulatory flood insurance rate maps are available for all jurisdictions in Appendix H.

Figure BB-2. Estimated Flood Zones in the Village of Victory



HISTORICAL OCCURRENCES

According to the National Oceanic and Atmospheric Administration (NOAA) Storm Prediction Center, National Centers for Environmental Information (NCEI) database, no flood events were known to have impacted the Village of Victory from January 1996 through June 2024. Flood events are often reported on a county-wide basis, or under-reported for individual municipalities, particularly in smaller communities.

PROBABILITY OF FUTURE EVENTS

While some incidents may be reported at the local municipal level, as indicated above, County level events provide a more robust risk assessment for each participating jurisdiction. According

ANNEX BB: VILLAGE OF VICTORY

to historical records for the Saratoga County planning area, the Village of Victory can expect to experience approximately five flood events every year. This frequency supports a “Highly Likely” probability of future events.

VULNERABILITY AND IMPACT

The Village of Victory planning team members identified critical facilities as assets that are considered the most important to the planning area and are susceptible to a range of potential impacts from a variety of natural hazards, including those facilities located in the regulatory floodplain. Table BB-18 includes the critical facilities in the Village of Victory located in the floodplain. Impacts to critical facilities located in the floodplain are listed in detail in flood hazard profile (Section 10).

Table BB-18. Critical Facilities in the Floodplain

JURISDICTION	CRITICAL FACILITY	FACILITY TYPE	FLOODPLAIN (1% or 0.2%)
Village of Victory	Water Distribution Plant	Sewage and Water	1%
Village of Victory	Hydro Station	Sewage and Water	1%

Historic loss estimates due to flood are presented in Table BB-19 below.

Table BB-19. Potential Annualized Losses, 1996-2024⁸

JURISDICTION	NUMBER OF EVENTS	PROPERTY & CROP LOSS	ANNUAL LOSS ESTIMATES
Village of Victory	0	\$0	\$0

While all citizens are at risk of the impacts of a flood, forced relocation and disaster recovery drastically impacts low-income residents who lack the financial means to travel, afford a long-term stay away from home, and to rebuild or repair their homes. The population over 65 in the Village of Victory is estimated at 16.6 percent of the Village’s total population and children under the age of 5 are estimated at 8.2 percent. The population with a disability is estimated at 16.1 percent of the Village’s total population. An estimated 15.6 percent of the Village of Victory’s population live below the poverty level and 1.0 percent of the populations speak a language other than English (Table BB-20).

Table BB-20. Populations at Greater Risk

JURISDICTION	65 AND OLDER	UNDER 5	WITH A DISABILITY	BELOW POVERTY LEVEL	LIMITED ENGLISH SPEAKING
Village of Victory	115	57	112	108	7

The severity of a flooding event varies depending on the relative risk to citizens and structures located within each jurisdiction. Table BB-21 depicts the level of impact for the Village of Victory.

⁸ Historical events are reported from 1996 through 2023; values are in 2024 dollars.

ANNEX BB: VILLAGE OF VICTORY

Table BB-21 Village of Victory Impact

JURISDICTION	IMPACT	DESCRIPTION
Village of Victory	Limited	The Village of Victory could have limited property damage with critical facilities typically shut down for 24 hours or less, and less than 10 percent of property would be destroyed or damaged.

NATIONAL FLOOD INSURANCE PROGRAM (NFIP) PARTICIPATION

The Village of Victory currently participates in the National Flood Insurance Program and is in good standing. The community has adopted a flood damage prevention ordinance that includes the minimum requirements for development in special flood hazard areas.

NFIP COMPLIANCE AND MAINTENANCE

The Village of Victory has developed mitigation actions that relate to NFIP participation, maintenance or compliance. Compliance and maintenance actions can be found in Section 23. Flooding was identified by the Village of Victory as a high-risk hazard during hazard ranking activities at the Risk Assessment Workshop. Many of the mitigation actions for the jurisdiction were developed with flood mitigation in mind.

The Village of Victory Planning Board is designated as the local floodplain administrator and is responsible for maintaining compliance in the NFIP through development regulations as outlines in the community flood damage prevention ordinance. The local flood damage prevention ordinance is available for review at the Village Office upon request.

The floodplain administrator is responsible for

- Permitting and inspecting construction activity in the floodplain
- Ensuring conformance with floodplain permit requirements
- Enforcing floodplain regulations
- Identifying Substantially Damaged structures and ensuring compliance during reconstruction
- Identifying Substantial Improvements in proposed development permit applications and ensuring compliance during construction
- Providing floodplain map and flood insurance information to the public
- Coordinating with FEMA to maintain the community's participation in the NFIP
- Keeping records of construction in the floodplain

Table BB-22 provides the most recent Community Assistance Visits (CAV) and Community Assistance Calls (CAC) dates along with the current status for the jurisdiction.

Table BB-22. Compliance History

JURISDICTION	DATE OF LAST CAV	DATE OF LAST CAC	CURRENT NFIP STATUS	POLICIES IN FORCE
Village of Victory	N/A	N/A	Good Standing	1

REPETITIVE LOSS

The Village of Victory currently has no repetitive loss or severe repetitive loss properties.

ANNEX BB: VILLAGE OF VICTORY

HAIL

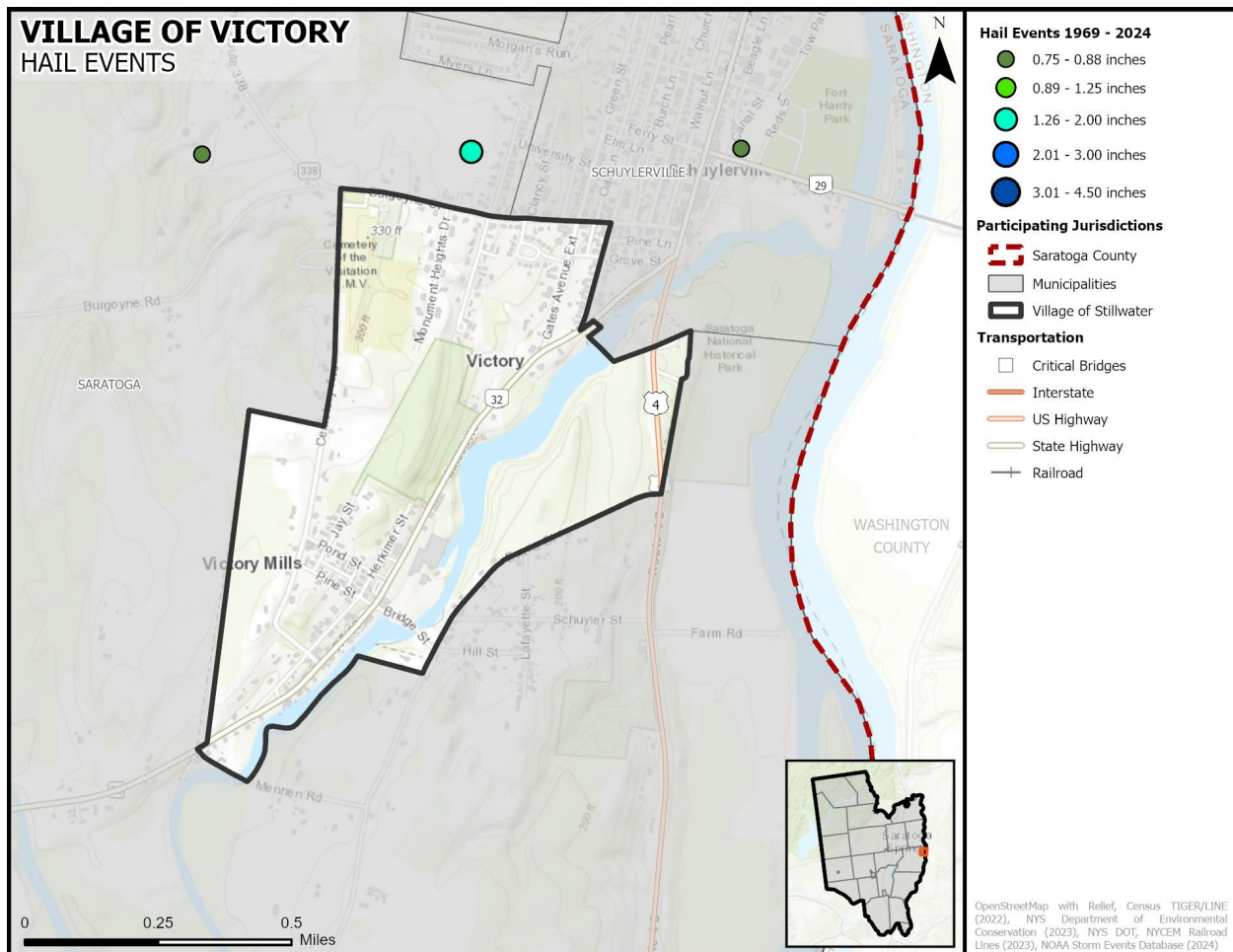
HAZARD DESCRIPTION, LOCATION, & EXTENT

The Saratoga County Hazard Mitigation Plan Update provides a hazard description, location and extent of the hail hazard for each participating jurisdiction (Section 11). Hail events are not confined to specific geographic boundaries and are considered similar for all participating jurisdictions throughout the planning area.

HISTORICAL OCCURRENCES

According to the National Centers for Environmental Information (NCEI) Storm Events database, from January 1969 through June 2024, no hail events are known to have impacted the Village of Victory. With no historical hail events reported for the Village of South Glens Falls, there have also been no recorded events since the 2019 Plan. Although there have not been any events reported within the Village of Victory, several hail events have been reported within close proximity to its boundary (Figure BB-3).

Figure BB-3. Historical Hail Events, 1969-2024



PROBABILITY OF FUTURE EVENTS

Historical hail events are reported on a county-wide basis. While some incidents may be reported at the local municipal level, as indicated above, county level events provide a more robust risk assessment for each participating jurisdiction. According to historical records for the Saratoga

ANNEX BB: VILLAGE OF VICTORY

County planning area, the Village of Victory can expect approximately three to four hail events every year. This frequency supports a “Highly Likely” probability of future events.

VULNERABILITY AND IMPACT

The Village of Victory planning team members identified the following critical facilities as assets that are considered the most important to the planning area. These facilities are susceptible to a range of impacts caused by hailstorm events. Hail impacts to critical facilities are similar across the entire planning area and are listed in detail in the hail hazard profile (Section 11).

Table BB-23. Critical Facilities at Risk

JURISDICTION	CRITICAL FACILITIES
Village of Victory	1 Fire Station, 2 Municipal Facilities, 2 Sewage and Water Facility

The U.S. Census data indicates a total of 49 (18 percent of total housing stock) manufactured homes located in the Village of Victory. In addition, 64 percent (approximately 172 structures) of the housing structures in the Village of Victory were built before 1980. These structures would typically be built to lower or less stringent construction standards than newer construction and may be more susceptible to damages during significant hail events.

Table BB-24. Structures at Greater Risk

JURISDICTION	MANUFACTURED HOMES	SFRR STRUCTURES BUILT BEFORE 1980
Village of Victory	49	172

While all citizens are at risk of the impacts of hail, forced relocation and disaster recovery drastically impacts low-income residents who lack the financial means to travel, afford a long-term stay away from home, and to rebuild or repair their homes. The population over 65 in the Village of Victory is estimated at 16.6 percent of the Village’s total population and children under the age of 5 are estimated at 8.2 percent. The population with a disability is estimated at 16.1 percent of the Village’s total population. An estimated 15.6 percent of the Village of Victory’s population live below the poverty level and 1.0 percent of the populations speak a language other than English (Table BB-25).

Table BB-25. Populations at Greater Risk

JURISDICTION	65 AND OLDER	UNDER 5	WITH A DISABILITY	BELOW POVERTY LEVEL	LIMITED ENGLISH SPEAKING
Village of Victory	115	57	112	108	7

Overall, the average loss estimate of property and crops in the Village of Victory is \$0 with an average annualized loss of \$0. Based on historic loss and damages, the impact of hail damages on the Village of Victory can be considered “Limited” severity of impact, meaning minor quality of life lost, critical facilities and services shut down for 24 hours or less, and less than 10 percent of property destroyed or with major damage.

ANNEX BB: VILLAGE OF VICTORY

Table BB-26. Estimated Annualized Losses

JURISDICTION	TOTAL PROPERTY & CROP LOSS	ANNUAL LOSS ESTIMATE
Village of Victory	\$0	\$0

ANNEX BB: VILLAGE OF VICTORY

HURRICANE / TROPICAL STORM

HAZARD DESCRIPTION, LOCATION, EXTENT, & HISTORICAL OCCURRENCES

The Saratoga County Hazard Mitigation Plan Update provides a hazard description, location, and extent of the hurricane/tropical storm hazard for each participating jurisdiction (Section 12). The location of the Saratoga County planning area is approximately 170 miles from the coast making the planning area, including Village of Victory, vulnerable to threats directly and indirectly related to a hurricane event, such as high-force winds and flooding. There is no geographic boundary to the hazard therefore the risk is considered similar for all participating jurisdictions throughout Saratoga County, including the. Historical hurricane data for the planning area, including the Village of Victory, are provided on a regional basis per the NCEI database. Therefore, all historical events are listed in Section 12 of the Plan Update.

PROBABILITY OF FUTURE EVENTS

According to NOAA Historical Hurricane Tracks there have been six hurricanes or tropical storms track across or near the planning area between January 1996 and June 2024. The probability of a hurricane or tropical storm affecting the planning area is considered “Occasional,” meaning that an event is probable in the next five years.

VULNERABILITY AND IMPACT

Hurricane and tropical storm events can cause major damage to large areas; hence, all existing buildings, facilities, and populations are equally exposed and vulnerable to this hazard and could potentially be impacted. The lack of historical impacts to the entire Saratoga County planning area supports a “Limited” severity of impact meaning injuries and/or illnesses are treatable with first aid, shutdown of facilities and services for 24 hours or less, and less than ten percent of property is destroyed or with major damage.

The Village of Victory planning team members identified the following critical facilities as assets that are considered the most important to the planning area. These facilities are susceptible to a range of impacts caused by hurricane events. Hurricane impacts to critical facilities are similar across the entire planning area and are listed in detail in the hurricane hazard profile (Section 12). The following critical facilities would be vulnerable to earthquake events in the Village of Victory:

Table BB-27. Critical Facilities at Risk

JURISDICTION	CRITICAL FACILITIES
Village of Victory	1 Fire Station, 2 Municipal Facilities, 2 Sewage and Water Facility

The population over 65 in the Village of Victory is estimated at 16.6 percent of the Village’s total population and children under the age of 5 are estimated at 8.2 percent. The population with a disability is estimated at 16.1 percent of the Village’s total population. An estimated 15.6 percent of the Village of Victory’s population live below the poverty level and 1.0 percent of the populations speak a language other than English (Table BB-28).

Table BB-28. Populations at Greater Risk

JURISDICTION	65 AND OLDER	UNDER 5	WITH A DISABILITY	BELOW POVERTY LEVEL	LIMITED ENGLISH SPEAKING
Village of Victory	115	57	112	108	7

ANNEX BB: VILLAGE OF VICTORY

Historic losses are typically reported on a county-wide basis. Please see Section 12 of this Plan for additional information on historical and annualized losses for the entire planning area.

ANNEX BB: VILLAGE OF VICTORY

ICE STORM

HAZARD DESCRIPTION, LOCATION, EXTENT, & HISTORICAL OCCURRENCES

The Saratoga County Hazard Mitigation Plan Update provides a hazard description, location, and extent of the ice storm hazard for each participating jurisdiction (Section 13). Ice storm events are not confined to specific geographic boundaries and are considered similar for all participating jurisdictions throughout the planning area. For the purposes of evaluating this hazard, the following NCEI reporting categories are included under ice storm: sleet, freezing fog, and ice storm. Historical ice storm data for the county, including the Village of Victory, are provided on a county-wide basis per the NCEI database. Therefore, all historical events are listed in Section 13 of the Plan Update.

PROBABILITY OF FUTURE EVENTS

According to historical records for the Saratoga County planning area, the Village of Victory can expect to experience an ice storm event approximately every five years. This frequency supports a “Occasional” probability of future events.

VULNERABILITY AND IMPACT

While the entirety of the Saratoga County planning area, including the Village of Victory, is exposed to ice storm events, existing buildings, infrastructure, and critical facilities are not likely to sustain significant damage from these events. However, the Village of Victory planning team members identified the following critical facilities (Table BB-29) as assets that are considered the most important to the planning area. These facilities are susceptible to a range of impacts caused by this hazard. Ice storm impacts to critical facilities are similar across the entire planning area and are listed in detail in the ice storm hazard profile (Section 13). The following critical facilities would be vulnerable to ice storm events in the Village of Victory:

Table BB-29. Critical Facilities at Risk

JURISDICTION	CRITICAL FACILITIES
Village of Victory	1 Fire Station, 2 Municipal Facilities, 2 Sewage and Water Facility

The population over 65 in the Village of Victory is estimated at 16.6 percent of the Village’s total population and children under the age of 5 are estimated at 8.2 percent. The population with a disability is estimated at 16.1 percent of the Village’s total population. An estimated 15.6 percent of the Village of Victory’s population live below the poverty level and 1.0 percent of the populations speak a language other than English (Table BB-30).

Table BB-30. Populations at Greater Risk

JURISDICTION	65 AND OLDER	UNDER 5	WITH A DISABILITY	BELOW POVERTY LEVEL	LIMITED ENGLISH SPEAKING
Village of Victory	115	57	112	108	7

Historic losses are reported on a county-wide basis. Please see Section 13 of this Plan for additional information on historical and annualized losses for the entire planning area.

ANNEX BB: VILLAGE OF VICTORY

LANDSLIDE

HAZARD DESCRIPTION, LOCATION, EXTENT, & HISTORICAL OCCURRENCES

The Saratoga County Hazard Mitigation Plan Update provides a hazard description, location and extent of the landslide hazard for all participating jurisdictions prone to landslides (Section 14). The majority of Saratoga County is categorized as having a low landslide incidence overall with the eastern section along the Hudson River categorized as having a high landslide incidence, including the Village of Victory.

Since 1996, the Saratoga County planning area has had three reported incidents and \$70,000 in damages due to landslides. It is noted however, that most landslide incidences within New York State have not been well documented.

PROBABILITY OF FUTURE EVENTS

Based on available records of historic events there are no known historic events of landslide in the Village of Victory over the 28.5-year reporting period which provides a probability of one event every five years. This frequency supports an “Occasional” probability of future events for the Village of Victory.

VULNERABILITY AND IMPACT

The only known areas susceptible to landslide within the planning area are located in the eastern and southern portions of the County along the Hudson River. Structures and infrastructure in close proximity to steep slopes along the river are vulnerable to landslide impacts. There have been minimal impacts to structures or infrastructure in the area due to landslide and there are no critical facilities located in the areas considered at greater risk. The lack of historical events or impacts supports a “Limited” severity of impact meaning injuries and/or illnesses are treatable with first aid, shutdown of facilities and services for 24 hours or less, and less than 10 percent of property is destroyed or with major damage.

ANNEX BB: VILLAGE OF VICTORY

LIGHTNING

HAZARD DESCRIPTION, LOCATION, & EXTENT

The Saratoga County Hazard Mitigation Plan Update provides a hazard description, location and extent of the lightning hazard for each participating jurisdiction (Section 15). Lightning events are not confined to specific geographic boundaries and are considered similar for all participating jurisdictions throughout the planning area.

HISTORICAL OCCURRENCES

There have been no recorded lightning events in the Village of Victory from January 1996 through June 2024. The NCEI is a national data source organized under the National Oceanic and Atmospheric Administration and considered a reliable resource for hazards. However, historical lightning events have only been reported as independent events to the NCEI in recent years and remain widely underreported. The flash density for the planning area along with input from local team members was utilized in evaluating the jurisdiction’s risk. The flash density for the entire planning area indicates regular occurrences of lightning events that simply are not being reported.

PROBABILITY OF FUTURE EVENTS

Based on historical records and input from the planning team the probability of occurrence for future lightning events in the Village of Victory is considered “Highly Likely,” or an event probable in the next year. The planning team stated that lightning occurs regularly in the area.

VULNERABILITY AND IMPACT

The Village of Victory planning team members identified the following critical facilities as assets that are considered the most important to the planning area. These facilities are susceptible to a range of impacts caused by lightning events. Lightning impacts to critical facilities are similar across the entire planning area and are listed in detail in the lightning hazard profile (Section 15).

Table BB-31. Critical Facilities at Risk

JURISDICTION	CRITICAL FACILITIES
Village of Victory	1 Fire Station, 2 Municipal Facilities, 2 Sewage and Water Facility

While all citizens are at risk to the impacts of lightning, forced relocation and disaster recovery drastically impacts low-income residents who lack the financial means to travel, afford a long-term stay away from home, and to rebuild or repair their homes. The population over 65 in the Village of Victory is estimated at 16.6 percent of the Village’s total population and children under the age of 5 are estimated at 8.2 percent. The population with a disability is estimated at 16.1 percent of the Village’s total population. An estimated 15.6 percent of the Village of Victory’s population live below the poverty level and 1.0 percent of the populations speak a language other than English (Table BB-32).

Table BB-32. Populations at Greater Risk

JURISDICTION	65 AND OLDER	UNDER 5	WITH A DISABILITY	BELOW POVERTY LEVEL	LIMITED ENGLISH SPEAKING
Village of Victory	115	57	112	108	7

ANNEX BB: VILLAGE OF VICTORY

With no historical lightning events or losses, the impacts of lightning events can be considered “Limited” with injuries or illness treatable with first aid, critical facilities and services shut down for 24 hours or less, and less than 10 percent of property destroyed. Overall, the average losses anticipated for the Village of Victory due to lightning are considered negligible.

ANNEX BB: VILLAGE OF VICTORY

SNOW STORM

HAZARD DESCRIPTION, LOCATION, EXTENT, & HISTORICAL OCCURRENCES

The Saratoga County Hazard Mitigation Plan Update provides a hazard description, location, and extent of the snow storm hazard for each participating jurisdiction (Section 16). Snow storm events are not confined to specific geographic boundaries and are considered similar for all participating jurisdictions throughout the planning area. For the purposes of evaluating this hazard, the following NCEI reporting categories are included under snow storm: blizzard, heavy snow, and winter storm. Historical snow storm data for the County, including the Village of Victory, are provided on a county-wide basis per the NCEI database. Therefore, all historical events are listed in Section 16 of the Plan Update.

PROBABILITY OF FUTURE EVENTS

According to historical records for the Saratoga County planning area, the Village of Victory can expect to experience a snow storm event approximately 13 times each year. This frequency supports a “Highly Likely” probability of future events.

VULNERABILITY AND IMPACT

While the entirety of the Saratoga County planning area, including the Village of Victory, is exposed to snow storm events, existing buildings, infrastructure, and critical facilities are not likely to sustain significant damage from these events. However, the planning team members identified the following critical facilities (Table BB-33) as assets that are considered the most important to the planning area. These facilities are susceptible to a range of impacts caused by this hazard. Snow storm impacts to critical facilities are similar across the entire planning area and are listed in detail in the snow storm hazard profile (Section 16). The following critical facilities would be vulnerable to snow storm events in the Village of Victory:

Table BB-33. Critical Facilities at Risk

JURISDICTION	CRITICAL FACILITIES
Village of Victory	1 Fire Station, 2 Municipal Facilities, 2 Sewage and Water Facility

The population over 65 in the Village of Victory is estimated at 16.6 percent of the Village’s total population and children under the age of 5 are estimated at 8.2 percent. The population with a disability is estimated at 16.1 percent of the Village’s total population. An estimated 15.6 percent of the Village of Victory’s population live below the poverty level and 1.0 percent of the populations speak a language other than English (Table BB-34).

Table BB-34. Populations at Greater Risk

JURISDICTION	65 AND OLDER	UNDER 5	WITH A DISABILITY	BELOW POVERTY LEVEL	LIMITED ENGLISH SPEAKING
Village of Victory	115	57	112	108	7

Historic losses are reported on a county-wide basis. Please see Section 16 of this Plan for additional information on historical and annualized losses for the entire planning area.

ANNEX BB: VILLAGE OF VICTORY

TORNADO

HAZARD DESCRIPTION, LOCATION, & EXTENT

The Saratoga County Hazard Mitigation Plan Update provides a hazard description, location and extent of the tornado hazard for each participating jurisdiction (Section 17). The risk of a tornado is not confined to specific geographic boundaries and the risk of an event is considered similar for all participating jurisdictions throughout the planning area.

HISTORICAL OCCURRENCES

According to the National Centers for Environmental Information (NCEI) Storm Events database, from January 1974 through June 2024, no tornado events are known to have impacted the Village of Victory. Based on the list of historical tornado events for the Village of Victory, there have been no recorded events since the 2019 Plan.

PROBABILITY OF FUTURE EVENTS

Historical tornado events are often reported on a county-wide basis, particularly when multiple smaller jurisdictions are impacted. While some incidents may be reported at the local municipal level, county level events provide a more robust risk assessment for each participating jurisdiction due to their similar geographic locations. According to historical records for the Saratoga County planning area, the Village of Victory can expect to experience a tornado event once every three to four years. This frequency supports a “Likely” probability of future events.

VULNERABILITY AND IMPACT

The Village of Victory planning team members identified the following critical facilities as assets that are considered the most important to the planning area. These facilities are susceptible to a range of impacts caused by tornado events. Tornado impacts to critical facilities are similar across the entire planning area and are listed in detail in the tornado hazard profile (Section 17).

Table BB-35. Critical Facilities at Risk

JURISDICTION	CRITICAL FACILITIES
Village of Victory	1 Fire Station, 2 Municipal Facilities, 2 Sewage and Water Facility

According to the American Community Survey (ACS) five-year estimates for 2022, a total of 49 manufactured homes are located in the Village of Victory (18 percent of total housing stock). In addition, 64 percent (approximately 172 structures) of the housing units were built before 1980. These structures would typically be built to lower or less stringent construction standards than newer construction and may be more susceptible to damage during tornado events.

Table BB-36. Structures at Greater Risk

JURISDICTION	SFR STRUCTURES BUILT BEFORE 1980	MANUFACTURED HOMES
Village of Victory	172	49

While all citizens are at risk to the impacts of a tornado event, forced relocation and disaster recovery drastically impacts low-income residents who lack the financial means to travel, afford a long-term stay away from home, and to rebuild or repair their homes. The population over 65 in the Village of Victory is estimated at 16.6 percent of the Village’s total population and children under the age of 5 are estimated at 8.2 percent. The population with a disability is estimated at

ANNEX BB: VILLAGE OF VICTORY

16.1 percent of the Village’s total population. An estimated 15.6 percent of the Village of Victory’s population live below the poverty level and 1.0 percent of the populations speak a language other than English (Table BB-37).

Table BB-37. Populations at Greater Risk

JURISDICTION	65 AND OLDER	UNDER 5	WITH A DISABILITY	BELOW POVERTY LEVEL	LIMITED ENGLISH SPEAKING
Village of Victory	115	57	112	108	7

The total annual loss estimate due to tornado events is \$0 (in 2024 dollars), having an approximate annual loss estimate of \$0. Based on historic damages and best available data the impact of a tornado event on the Village of Victory would be considered “Limited,” with injuries and illness treatable with first aid, critical facilities and services shutdown for 24-hours or less and less than 10 percent of properties destroyed or with major damage.

Table BB-38. Estimated Average Annual Losses

JURISDICTION	TOTAL PROPERTY & CROP LOSS	AVERAGE ANNUAL LOSS ESTIMATES
Village of Victory	\$0	\$0

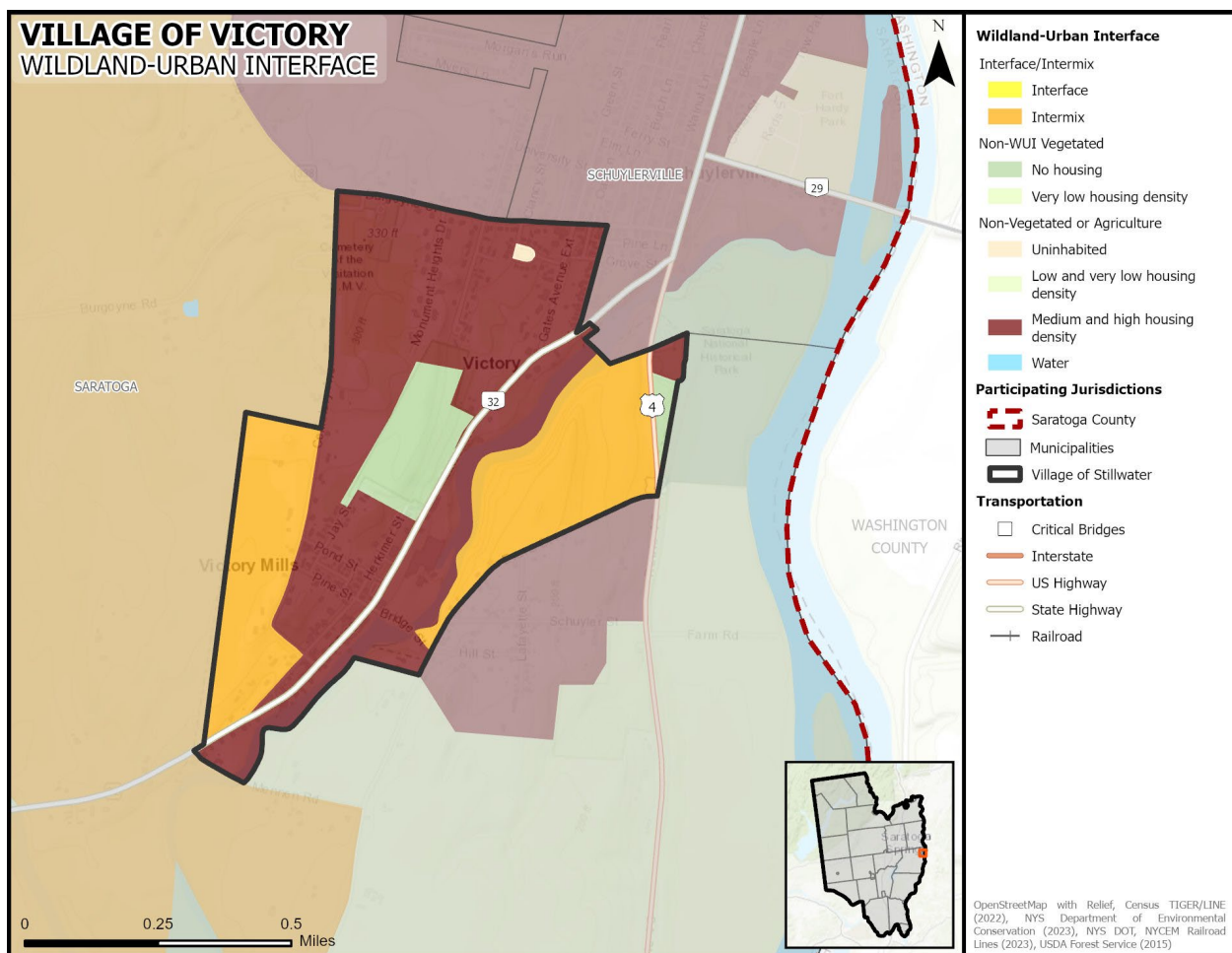
ANNEX BB: VILLAGE OF VICTORY

WILDFIRE

HAZARD DESCRIPTION, & LOCATION

The Saratoga County Hazard Mitigation Plan Update provides a hazard description of the wildfire hazard for each participating jurisdiction (Section 18). A wildfire event can be a potentially damaging consequence of drought conditions, lightning, or wind event, if the conditions allow. Wildfires can vary greatly in terms of size, location, intensity, and duration. While wildfires are not confined to any specific geographic location, they are most likely to occur in open grasslands, highly vegetative areas, or along the forest floor, when conditions are favorable. The threat to people and property from a wildfire event is greater in the fringe areas where developed areas meet open grass lands, such as the Wildland Urban Interface (WUI). (Figure BB-4). The Village of Victory planning area is considered at low risk for wildfires with limited WUI areas.

Figure BB-4. Village of Victory Wildland Urban Interface Map



The New York State Department of Environmental Conservation (NYS DEC), Division of Forest Protection regularly identifies Fire Danger Rating Area (FDRA) Risk across the state. Reviewing a combination of temperature, wind, relative humidity, fuel and/or drought conditions, the Division of Forest Protection issues color coded danger alerts. The entire planning area, including the Village of Victory, had a “Moderate” FDRA Risk rating as of October 2024 (Section 18, Figure 18-2).

ANNEX BB: VILLAGE OF VICTORY

EXTENT

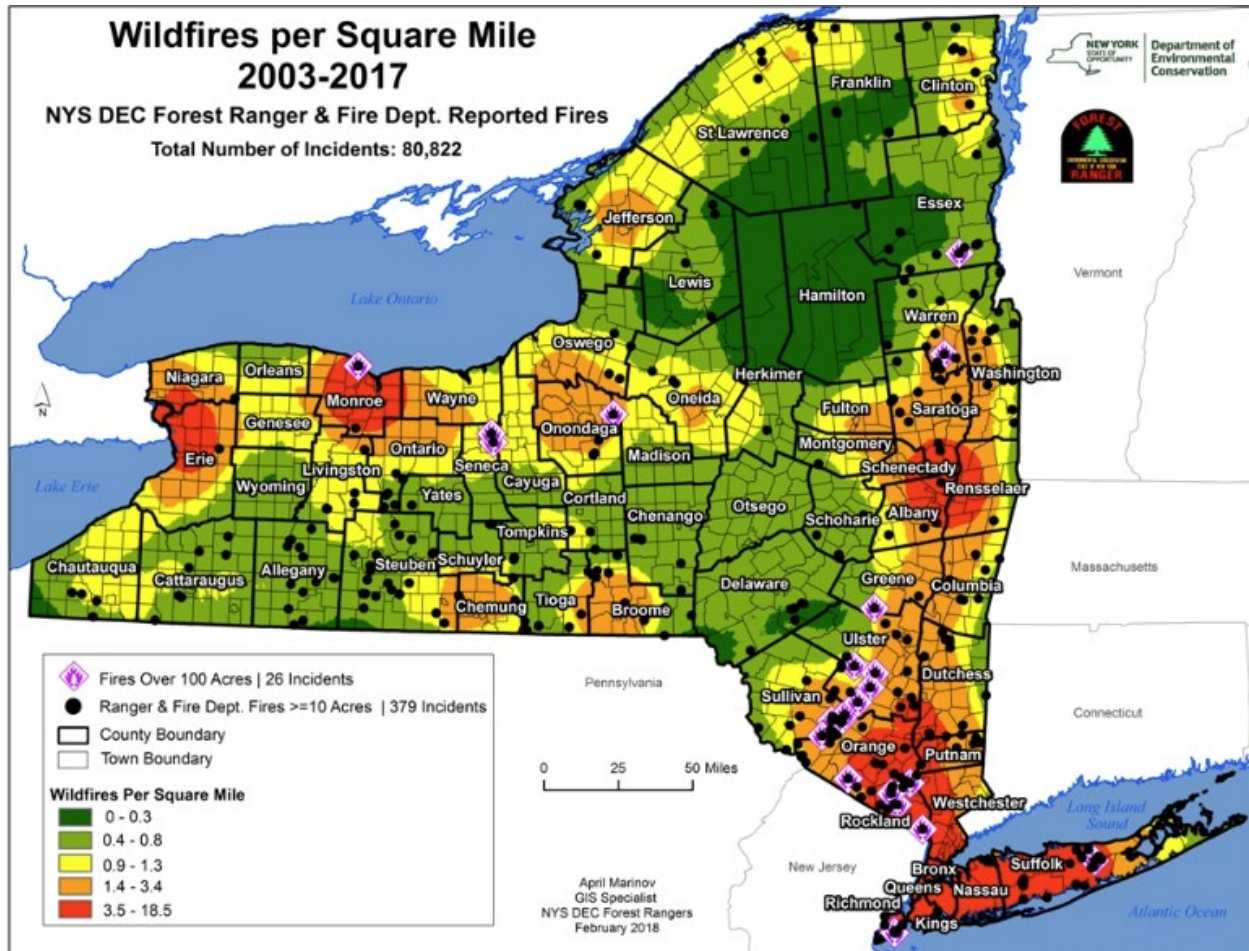
Risk for a wildfire event is measured in terms of magnitude and intensity using the Keetch Byram Drought Index (KBDI), a mathematical system for relating current and recent weather conditions to potential or expected fire behavior. The KBDI is available at the county level. The Saratoga County Hazard Mitigation Plan Update provides KBDI levels and descriptions along with the range of historical KBDI levels for the planning area (Section 18).

The average extent to be mitigated for the planning area is a KBDI of 300 to 400. At this level fires more readily burn and will carry across an area with no gaps. Heavier fuels will not readily ignite and burn. Expect smoldering and the resulting smoke to carry into and possibly through the night. Based on historical records and readily available fuel, the planning area can anticipate a KBDI range from 0 to 500. At the high end of this range fire intensity begins to significantly increase. Fires will readily burn in all directions exposing mineral soils in some locations. Larger fuels may burn or smolder for several days creating possible smoke and control problems.

The NYS DEC provides historical wildfire statistics from 2003 through 2017 (Figure BB-5). Detailed data on historic wildfires in the planning area, including damages, acres burned, fatalities, or injuries, was not available. There were ten wildfires greater than 10 acres in Saratoga County during that same period, with the greatest wildfires per square mile occurring in the southern portions of the county. The Saratoga County planning area can anticipate limited future wildfire events, typically burning less than 10 acres with infrequent events exceeding 10 acres.

ANNEX BB: VILLAGE OF VICTORY

Figure BB-5. Wildfires per Square Mile, 2003-2017



HISTORICAL OCCURRENCES

Between 2008 and 2022 there were 62 wildfire events in Saratoga County. These incidents are reported county-wide. Most of the incidents were timber fires (48), followed by grass fires (8), brush (4), and slash (2). Based on data provided for historical wildfire events for Saratoga County planning area, 19 events have occurred since the 2019 Plan.

PROBABILITY OF FUTURE EVENTS

With 62 events in a 15-year period, a wildfire event within Saratoga County planning area, including Saratoga County, is “Highly Likely” meaning an event is probable within the next year.

VULNERABILITY AND IMPACT

The Village of Victory planning team members identified the following critical facilities as assets that are considered the most important to the planning area. These facilities are susceptible to a range of impacts caused by wildfire events. Wildfire impacts to critical facilities are similar across the entire planning area and are listed in detail in the wildfire hazard profile (Section 18).

ANNEX BB: VILLAGE OF VICTORY

Table BB-39. Critical Facilities at Risk

JURISDICTION	CRITICAL FACILITIES
Village of Victory	1 Sewage and Water Facility

For the Village of Victory, the impact from a wildfire event can be considered "Limited," meaning injuries and/or illnesses are treatable with first aid, complete shutdown of facilities and services for 24-hours or less and less than 10 percent of property is destroyed or with major damage. Severity of impact is gauged by acreage burned, homes and structures lost, injuries and fatalities.

ANNEX BB: VILLAGE OF VICTORY

WIND

HAZARD DESCRIPTION, LOCATION, & EXTENT

The Saratoga County Hazard Mitigation Plan Update provides a hazard description, location and extent of the wind hazard for each participating jurisdiction (Section 19). Wind events are not confined to specific geographic boundaries and are considered similar for all participating jurisdictions throughout the planning area.

HISTORICAL OCCURRENCES

Since 1960, one wind event is known to have occurred in the Village of Victory. Table BB-40 presents information on known historical events impacting the Village of Victory.

Table BB-40. Historical Wind Events, 1960-2024⁹

JURISDICTION	DATE	TIME	MAGNITUDE (knots)	DEATHS	INJURIES	PROPERTY DAMAGE	CROP DAMAGE
Village of Victory	4/19/2004	2120	60	0	0	\$0	\$0
TOTALS			(MAX EXTENT)	0	0	\$0	\$0

Based on the list of historical wind events for the Village of Victory, no reported events have occurred since the 2019 Plan.

PROBABILITY OF FUTURE EVENTS

Historical wind events are typically reported on a county-wide basis. While some incidents may be reported at the local municipal level, as indicated above, county level events provide a more robust risk assessment for each participating jurisdiction. According to historical records for the Saratoga County planning area, the Village of Victory can expect to experience a wind event every year. This frequency supports a “Highly Likely” probability of future events.

VULNERABILITY AND IMPACT

The Village of Victory planning team members identified the following critical facilities as assets that are considered the most important to the planning area. These facilities are susceptible to a range of impacts caused by wind events. Wind impacts to critical facilities are similar across the entire planning area and are listed in detail in the wind hazard profile (Section 19).

Table BB-41. Critical Facilities at Risk

JURISDICTION	CRITICAL FACILITIES
Village of Victory	1 Fire Station, 2 Municipal Facilities, 2 Sewage and Water Facility

According to the American Community Survey (ACS) five-year estimates for 2022, a total of 49 manufactured homes are located in the Village of Victory (18 percent of total housing stock). In addition, 64 percent (approximately 172 structures) of the housing units were built before 1980. These structures would typically be built to lower or less stringent construction standards than newer construction and may be more susceptible to damage during significant wind events.

⁹ Historical events are reported from 1960 through 2024. Magnitude is listed when available. Damage values are in 2024 dollars.

ANNEX BB: VILLAGE OF VICTORY

Table BB-42. Structures at Greater Risk

JURISDICTION	SFR STRUCTURES BUILT BEFORE 1980	MANUFACTURED HOMES
Village of Victory	172	49

While all citizens are vulnerable to the impacts of wind events, forced relocation and disaster recovery drastically impacts low-income residents who lack the financial means to travel, afford a long-term stay away from home, and to rebuild or repair their homes. The population over 65 in the Village of Victory is estimated at 16.6 percent of the Village’s total population and children under the age of 5 are estimated at 8.2 percent. The population with a disability is estimated at 16.1 percent of the Village’s total population. An estimated 15.6 percent of the Village of Victory’s population live below the poverty level and 1.0 percent of the populations speak a language other than English (Table BB-43).

Table BB-43. Populations at Greater Risk

JURISDICTION	65 AND OLDER	UNDER 5	WITH A DISABILITY	BELOW POVERTY LEVEL	LIMITED ENGLISH SPEAKING
Village of Victory	115	57	112	108	7

Structural impact of wind events experienced in the Village of Victory would be considered “Limited,” with injuries or illness treatable with first aid, less than 10 percent of property destroyed and critical facilities shut down for less than 24-hours. Over the 64.5-year reporting period there has been a total of \$0 damages (in 2024 dollars) in the Village of Victory due to wind events. The estimated average annual loss from a wind event is \$0.

Table BB-44. Estimated Annualized Losses

JURISDICTION	TOTAL PROPERTY & CROP LOSS	ANNUAL LOSS ESTIMATES
Village of Victory	\$0	\$0

ANNEX BB: VILLAGE OF VICTORY

CLIMATE CHANGE CONSIDERATIONS

The Saratoga County Hazard Mitigation Plan Update provides climate change considerations for all natural hazards for the entire planning area as climate change impacts are considered similar across all participating jurisdictions in Saratoga County unless otherwise stated. Please see Sections 5 through 19 of this Plan Update for additional information on climate change considerations by hazard.

HUMAN-CAUSED HAZARDS

The Saratoga County Hazard Mitigation Plan update provides a detailed hazard profile for the human-caused hazard invasive species. Information for this hazard is limited and typically reported at the county level. As such, the evaluation of human-caused hazards is considered similar for all jurisdictions in the Saratoga County planning area. Please see Section 20 of this Plan Update for additional information on the human-caused hazard evaluated for this plan.

ANNEX BB: VILLAGE OF VICTORY

PREVIOUS MITIGATION ACTIONS

VILLAGE OF VICTORY PREVIOUS ACTIONS											
Initiative	Mitigation Initiative	Applies to New and/or Existing Structures	Hazards Mitigated	Goals Met	Objectives Met	Lead	Support	Estimated Cost	Sources of Funding	Timeline	2025 Analysis
VV-1a	Where appropriate, support retrofitting of structures located in hazard-prone areas to protect structures from future damage, with repetitive loss and severe repetitive loss properties as priority. Identify facilities that are viable candidates for retrofitting based on cost effectiveness versus relocation. Where retrofitting is determined to be a viable option, consider implementation of that action based on available funding.	Existing	Flood, Severe Storm	1, 2, 3, 5	1-1, 1- 2, 1-3, 2-2, 2- 3, 2-4, 3-1, 3-5	NFIP Floodplain Administrator	NYS DHSES, FEMA	High	FEMA Mitigation Grant Programs and local budget (or property owner) for cost share	Long Term	Defer to plan update.
VV-1b	Where appropriate, support purchase, or relocation of structures located in hazard prone areas to protect structures from future damage, with repetitive loss and severe repetitive loss properties as priority. Identify facilities that are viable candidates for relocation based on cost effectiveness versus retrofitting. Where relocation is determined to be a viable option, consider implementation of that action based on available funding.	Existing	Flood, Severe Storm	1, 2, 3, 5	1-1, 1- 2, 1-3, 2-2, 2- 3, 2-4, 3-1, 3-5	NFIP Floodplain Administrator	NYS DHSES, FEMA	High	FEMA Mitigation Grant Programs and local budget (or property owner) for cost share	Long Term	Defer to plan update.
VV-2	Consider participation in incentive-based programs such as CRS.	New & Existing	Flood	1, 2, 5	1-1, 1- 3, 1-6, 2-1, 2- 2, 2-3, 2-4, 5-2	NFIP Floodplain Administrator	NYS DHSES, ISO, FEMA	Low - Medium	Local Budget	Long Term	Defer to plan update.
VV-3	Continue to support the implementation, monitoring,	New & Existing	All Hazards	All	All	NFIP Floodplain	County (through Mitigation	Low – High (for 5-year	Local Budget, possibly FEMA	Ongoing	Defer to plan update.

ANNEX BB: VILLAGE OF VICTORY

VILLAGE OF VICTORY PREVIOUS ACTIONS											
Initiative	Mitigation Initiative	Applies to New and/or Existing Structures	Hazards Mitigated	Goals Met	Objectives Met	Lead	Support	Estimated Cost	Sources of Funding	Timeline	2025 Analysis
	maintenance, and updating of this Plan, as defined in Section 7.0.					Administrator	Planning Coordinator), NYS DHSES	update)	Mitigation Grant Funding for 5-year update		
VV-4	Strive to maintain compliance with, and good standing in the National Flood Insurance program.	New & Existing	Flood	1, 2, 4	1-1, 1- 2, 1-3, 1-8, 2- 2, NFIP 2-3, 2-4, 4- 1, 4-2, 4-3, 4- 4	Floodplain Administrator	NYS DHSES, ISO, FEMA	Low - Medium	Local Budget	Ongoing	Defer to plan update.
VV-5	Continue to develop, enhance, and implement existing emergency plans.	New & Existing	All Hazards	1. 3	1-1, 1- 7, 3-2, 3-4, 3- 5	Emergency Management with support from County OEM and NYS DHSES	County Emergency Management, NYS DHSES	Low - Medium	Local Budget	Ongoing – Long-term depending on initiative	Defer to plan update.
VV-6	Create/enhance/ maintain mutual aid agreements with neighboring communities.	New & Existing	All Hazards	3, 5	3-4, 5- 1, 5-3	Emergency Management, DPW and Roads	Surrounding municipalities and County	Low - Medium	Local Budget	Long Term	Defer to plan update.
VV-7	Support County-wide initiatives identified in Section 9.1 of the County Annex.	New & Existing	All Hazards	All	All	Appropriate Departments	County and Regional agencies (as appropriate for initiative)	Low - High	Existing programs and grant funding where applicable	Long Term	Defer to plan update.
VV-8	Create/update the Emergency Action Plans for all dams located within the municipality.	Existing	Flood	1, 3	1-1, 1- 6, 1-7, 3-1, 3- 2, 3-4	Office of Emergency Management	Watershed districts (if applicable); neighboring municipalities; County (if applicable); NYS	Medium to Low	FEMA HMA	Long Term	Delete Action. Jurisdiction is not profiling dam failure.
VV-9	Implement dam structure repairs as required by dam safety report/protocols.	Existing	Flood	3	3-1, 3- 3, 3-6	NFIP Floodplain Administrator	Watershed districts (if applicable); neighboring municipalities; County (if applicable); NYS	Medium	FEMA HMA	Ongoing	Delete Action. Jurisdiction is not profiling dam failure.

ANNEX BB: VILLAGE OF VICTORY

VILLAGE OF VICTORY PREVIOUS ACTIONS											
Initiative	Mitigation Initiative	Applies to New and/or Existing Structures	Hazards Mitigated	Goals Met	Objectives Met	Lead	Support	Estimated Cost	Sources of Funding	Timeline	2025 Analysis
VV-10	Support the Installation/Implementation of Community Emergency Alert System.	New & Existing	All Hazards	1, 3, 5	1-1, 3- 1, 3-3, 3-5, 3- 6, 5-1	LEMC	Watershed districts (if applicable); neighboring municipalities; County (if applicable); NYS	Medium	FEMA HMA	Short Term	Completed. Village has a siren at Village Hall and a reverse 911 system in place.
VV-11	Create a mitigation support fund to provide matching funds on an ongoing basis for municipality and residential mitigation projects which will fund cost sharing portions of projects and be replenished during the annual budget cycle.	New & Existing	All Hazards	1, 2, 3, 5	1-3, 1- 9, 2-5, 3-1, 5- 2	Village Board	Not Provided	Medium	Operating Budget	Short Term	Defer to plan update.

ANNEX BB: VILLAGE OF VICTORY

NEW MITIGATION ACTIONS

VILLAGE OF VICTORY MITIGATION ACTIONS														
*Projects related to Critical Facilities (CF) will protect the facility to the 500-year event or worst damage scenario, whichever is greater.														
Project #	Goal / Objective being Met	Hazard to be Mitigated	Project Name and Description of the Problem	Description of the Solution	CF?*	EHP Issues	Estimated Timeline	Lead Agency	Estimated Costs	Estimated Benefits	Potential Funding Sources	Priority	Community Lifeline	Action Type
1	1.1	Flood	Drain and Culvert Improvements: Inadequate drainage systems cause flooding, damage to roadways, and create hazardous driving conditions for motorists. This action protects the community and reduces the risk of flooding.	Upgrade undersized stormwater drains and culverts with focus on local road and new development.	No	Further review required	18 months	NFIP Floodplain Administrator	\$1,000,000	By identifying vulnerable high infrastructures and making necessary improvements to expand drainage capability reduces flood risk and risk of damages and injuries. In addition, this would also reduce emergency response demands.	Local Department Budget; HMGP, BRIC, CDBG, PA 406 (when applicable) local bonds	H	Water Systems Transportation	Structure and Infrastructure
2	1.3	Drought, Earthquake, Extreme Cold, Extreme Heat, Flood, Hail, Hurricane/Tropical Storm, Ice Storm, Landslide, Lightning, Snowstorm, Tornado, Wildfire, Wind	Infrastructure Improvement Planning: The Village's current infrastructure is in need of assessment to ensure critical facilities have a reduce risk to the vulnerabilities of natural hazards.	Develop a strategic infrastructure improvement plan and implement recommended projects to upgrade essential infrastructure components (roads, sewage, water supply, etc.). Ensure all infrastructure is hazard resistant and resilient to future changes.	Yes	Further review required	60 Months	DPW, Village Board, Planning Board, Zoning Board	\$1,000,000	Reduce the risk of damages to critical infrastructure and services. Ensure the continuity of critical services during hazard events. Increase tax revenue to promote growth and resilience.	Local Department Budget; HMGP, BRIC, CDBG, PA 406 (when applicable) local bonds	M	Safety/Security	Structure and Infrastructure
3	1.1	Flood, Wildfire	Development of new fire station and community	Assess feasibility to upgrade or construct a	Yes	Further review	60 Months	Emergency Management,	\$1,000,000	Reduce the risk of injury and fatalities	Local Department	M	Safety/Security	Structure and Infrastructure

ANNEX BB: VILLAGE OF VICTORY

VILLAGE OF VICTORY MITIGATION ACTIONS

*Projects related to Critical Facilities (CF) will protect the facility to the 500-year event or worst damage scenario, whichever is greater.

Project #	Goal / Objective being Met	Hazard to be Mitigated	Project Name and Description of the Problem	Description of the Solution	CF?*	EHP Issues	Estimated Timeline	Lead Agency	Estimated Costs	Estimated Benefits	Potential Funding Sources	Priority	Community Lifeline	Action Type
			center: Enhance operational capacity to ensure appropriate accommodations for residents/evacuees and ensuring appropriate response during and after a disaster event. During hazard events the Fire Station will serve as a community center for impacted residents and will be equipped with backup generators. This project helps ensure critical facilities continue to provide services during a power outage caused by unforeseen events.	fire station outside of high hazard areas, ensuring facility is hazard resistant to mitigate natural disaster impacts and is additionally able to serve as a community center.		required		Fire Department		to residents. The fire department serves more than 600 residents in a 34 square mile area. Ensure continuity of critical services and emergency response.	Budget; HMGP, BRIC, CDBG, PA 406 (when applicable) local bonds			
4	1.4	Flood, Hail, Hurricane/ Tropical Storm, Ice Storm, Lightning, Snowstorm Tornado, Wind	Retrofit RL/SRL Structures: Structures located in known hazard-prone areas are subject to repetitive damage. This project protects infrastructure, reduces cost of reparation, and prevents injury to residents.	Where appropriate, support retrofitting of structures located in hazard-prone areas to protect structures from future damage, with repetitive loss and severe repetitive loss properties as priority. Identify facilities that are viable candidates for retrofitting based on cost- effectiveness versus relocation. Where retrofitting is	Yes	Further review required	60 Months	NFIP Floodplain Administrator	\$1,000,000	Reduce the risk of damage and the loss of life.	Local Department Budget; HMGP, BRIC, CDBG, PA 406 (when applicable) local bonds	H	Safety/Security	Structure and Infrastructure

ANNEX BB: VILLAGE OF VICTORY

VILLAGE OF VICTORY MITIGATION ACTIONS

*Projects related to Critical Facilities (CF) will protect the facility to the 500-year event or worst damage scenario, whichever is greater.

Project #	Goal / Objective being Met	Hazard to be Mitigated	Project Name and Description of the Problem	Description of the Solution	CF?*	EHP Issues	Estimated Timeline	Lead Agency	Estimated Costs	Estimated Benefits	Potential Funding Sources	Priority	Community Lifeline	Action Type
				determined to be a viable option, consider implementation of that action based on available funding.										
5	1.4	Flood	Relocate Structures: Structures located in known hazard-prone areas are subject to repetitive damage. This project protects infrastructure, reduces cost of reparation, and prevents injury to residents.	Where appropriate, support purchase, or relocation of structures located in hazard prone areas to protect structures from future damage, with repetitive loss and severe repetitive loss properties as priority. Identify facilities that are viable candidates for relocation based on cost-effectiveness versus retrofitting. Where relocation is determined to be a viable option, consider implementation of that action based on available funding.	Yes	Further review required	60 Months	NFIP Floodplain Administrator	\$1,000,000	Reduce the risk of damage and the loss of life.	Local Department Budget; HMGP, BRIC, CDBG, PA 406 (when applicable) local bonds	H	Safety/Security	Structure and Infrastructure
6	1.3	Flood	Community Rating System: By exploring the CRS program the County would potentially receive insurance premium rates that are discounted to reflect the reduced flood	Consider participation in incentive-based programs such as CRS.	Yes	N/A	36 Months	NFIP Floodplain Administrator	\$10,000	Reduce flood insurance premiums for local residents; Reduce flood risk and build resiliency.	Local Department Budget, Staff time	M	Safety/Security	Local Plans and Regulations

ANNEX BB: VILLAGE OF VICTORY

VILLAGE OF VICTORY MITIGATION ACTIONS

*Projects related to Critical Facilities (CF) will protect the facility to the 500-year event or worst damage scenario, whichever is greater.

Project #	Goal / Objective being Met	Hazard to be Mitigated	Project Name and Description of the Problem	Description of the Solution	CF?*	EHP Issues	Estimated Timeline	Lead Agency	Estimated Costs	Estimated Benefits	Potential Funding Sources	Priority	Community Lifeline	Action Type
			risk resulting from the community's efforts to reduce and avoid flood damage to insurable property, strengthen and support the insurance aspects of the National Flood Insurance Program and foster comprehensive floodplain management. This project promotes public safety.											
7	1.3	Flood	NFIP Participation: Failure to adhere to NFIP requirements can result in loss of program benefits, increased flood risk, and financial burdens for residents. There is a need to ensure compliance with NFIP standards to protect the community and secure affordable flood insurance options. This project promotes public safety.	Strive to maintain compliance with, and good standing in the National Flood Insurance program.	Yes	N/A	60 Months	NFIP Floodplain Administrator	\$10,000	Reduce flood insurance premiums for local residents; Reduce flood risk and build resiliency.	Local Department Budget, Staff time	M	Safety/Security	Local Plans and Regulation
8	1.3	Drought, Earthquake, Extreme Cold, Extreme Heat, Flood, Hail, Hurricane/Tropical Storm, Ice	Develop, enhance, and implement: There is a need to ensure a structured approach to guarantee that the Plan remains updated, effective, and aligned with its goals. This project promotes public safety by addressing all hazards	Continue to develop, enhance, and implement existing emergency plans. Support County-wide initiatives identified in the County Annex.	No	N/A	12-60 Months	Emergency Management with support from County OEM and NYS DHS&ES	\$10,000	Ensure all plans are updated and aligned with one another; Ensure local jurisdictions remain aligned with the Plans goals and risk reduction activities.	Local Department Budget, Staff time	H	Safety/Security	Local Plans and Regulation

ANNEX BB: VILLAGE OF VICTORY

VILLAGE OF VICTORY MITIGATION ACTIONS

*Projects related to Critical Facilities (CF) will protect the facility to the 500-year event or worst damage scenario, whichever is greater.

Project #	Goal / Objective being Met	Hazard to be Mitigated	Project Name and Description of the Problem	Description of the Solution	CF?*	EHP Issues	Estimated Timeline	Lead Agency	Estimated Costs	Estimated Benefits	Potential Funding Sources	Priority	Community Lifeline	Action Type
		Storm, Landslide, Lightning, Snowstorm, Tornado, Wildfire, Wind, Invasive Species	and being NIMS compliant while working with the Emergency Operations Plan.											
9	5.1, 5.2, 5.3	Drought, Earthquake, Extreme Cold, Extreme Heat, Flood, Hail, Hurricane/Tropical Storm, Ice Storm, Landslide, Lightning, Snowstorm, Tornado, Wildfire, Wind	Create, enhance, and maintain: Mutual aid agreements are crucial in disaster or emergency situations. Ensuring that mutual aid agreements are up to date will ensure that neighboring communities can help one another in a timely manner. This project promotes public safety.	Create/enhance/maintain mutual aid agreements with neighboring communities.	No	N/A	36-48 Months	Emergency Management, DPW and Roads	\$10,000	Ensure mutual aid agreements remain updated and effective; Ensure local jurisdictions remain aligned with one another and ready to assist when needed.	Local Department Budget, Staff time	H	Safety/Security	Preparedness
10	3.1	Drought, Earthquake, Extreme Cold, Extreme Heat, Flood, Hail, Hurricane/Tropical	Public Awareness Program: The general public may not be aware of the risk of hazards that could impact the County. Creating a support fund could encourage community members to support mitigation projects	Create a mitigation support fund to provide matching funds on an ongoing basis for municipality and residential mitigation projects which will fund cost-sharing portions of projects and be	No	N/A	60 Months	Village Board	\$10,000	Reduce the risk of damage and the loss of life.	Local Department Budget, Staff time	M	Safety/Security	Preparedness

ANNEX BB: VILLAGE OF VICTORY

VILLAGE OF VICTORY MITIGATION ACTIONS

*Projects related to Critical Facilities (CF) will protect the facility to the 500-year event or worst damage scenario, whichever is greater.

Project #	Goal / Objective being Met	Hazard to be Mitigated	Project Name and Description of the Problem	Description of the Solution	CF?*	EHP Issues	Estimated Timeline	Lead Agency	Estimated Costs	Estimated Benefits	Potential Funding Sources	Priority	Community Lifeline	Action Type
		Storm, Ice Storm, Landslide, Lightning, Snowstorm, Tornado, Wildfire, Wind, Invasive Species	and costs associated with them. This project promotes public safety.	replenished during the annual budget cycle.										
11	1.3	Dam Failure, Drought, Earthquake, Extreme Cold, Extreme Heat, Flood, Hail, Hurricane/Tropical Storm, Ice Storm, Landslide, Lightning, Snowstorm, Tornado, Wildfire, Wind, Invasive Species	Implementation, Monitoring, and Maintenance: There is a need to ensure a structured approach to guarantee that the Plan remains updated, effective, and aligned with its goals. This project promotes public safety.	Continue to support the implementation, monitoring, maintenance, and updating of this Plan, as defined in Section 24.	No	N/A	12-60 Months	NFIP Floodplain Administrator	\$10,000	Ensure local hazard mitigation plan remains updated and effective; Ensure local jurisdictions remain aligned with the Plans goals and risk reduction activities.	Local Department Budget, Staff time	H	Safety/Security	Local Plans and Regulations

ANNEX BB: VILLAGE OF VICTORY

CAPABILITY ASSESSMENT

COMMUNITY CAPABILITY CHECKLIST	
PLANS	
Basic Plan/Floodplain Management Plan	X
Capital Improvements Plan	
Climate Change Adaptation Plan	
Community Wildfire Protection Plan	
Comprehensive / Master Plan / Land Use Plan	X
Continuity of Operations Plan	
Drought Contingency Plan/Protocol on Water Restrictions	
Economic Development Plan	
Emergency Management/Response Action Plan	X
Emergency Operations Plan	
Evacuation Plan	
Extreme Heat Protocol	
Hazard Mitigation Plan	X
Open Space Plan	
Post Disaster Recovery Plan	
Shoreline Management Plan/Ordinance	
Stormwater Management Plan / Ordinance	
Transportation Plan	
POLICIES/ORDINANCES	
Building Codes	X
Fire Code	
Floodplain Ordinance	X
Manufactured Home Restrictions	
Post Disaster Recovery Ordinance	
Real Estate Disclosure Requirement	
Site Plan Review Requirements	X

ANNEX BB: VILLAGE OF VICTORY

COMMUNITY CAPABILITY CHECKLIST	
Stormwater Ordinance	
Subdivision Regulations	X
Wildfire Ordinance	
Zoning Ordinance/Land Use Restrictions	X
Other (Special Purpose Ordinance (i.e., critical or sensitive areas))	
PROGRAMS	
Firewise Communities	
Floodplain Maps/Flood Insurance Studies	X
Growth Management	
Hydrologic/Hydraulic Studies	
Mutual Aid Agreement	
National Flood Insurance Program Participant	
NFIP Community Rating System Participant	X
Property Acquisition Program	
Public Education/Awareness Programs	
Storm Drainage Systems Maintenance Program	
Stream Maintenance Program	
StormReady Communities	
Warning Systems/Services (reverse 911, outdoor warning sirens)	
STAFF / DEPARTMENTS	
Building Code Official	
Emergency Manager	
Engineers or Planners with Knowledge of Land Development and Land Management Practices	X
Engineers or Professionals Trained in Constructions Practices Related to Buildings and/or Infrastructure	
Environmental Conservation Specialist	
Floodplain Administrator	X
Geographic Information System (GIS) Coordinator	
Personnel with Hazard Knowledge	

ANNEX BB: VILLAGE OF VICTORY

COMMUNITY CAPABILITY CHECKLIST	
Planners	
Public Information Official	
Resource Development/Grant Writer	
Surveyors	